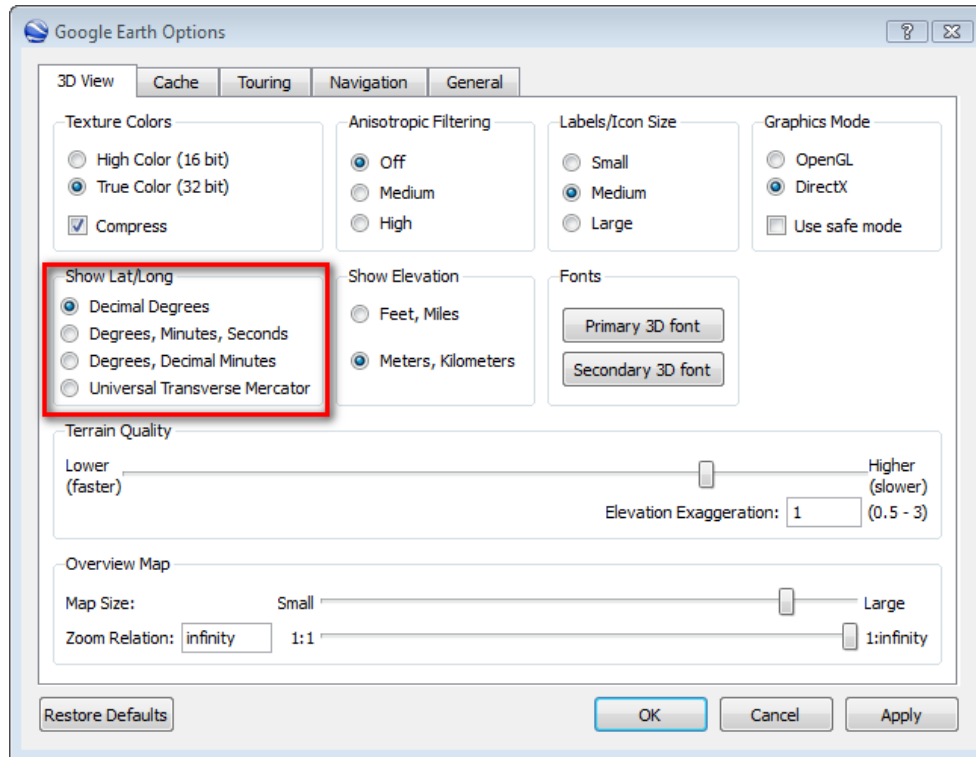


Fairport recommends that Clients purchase Orthorectified Images (ECW format) from their State Lands dept or some other source rather than using Google Images. This will improve accuracy and they will import without requiring manual digitising.

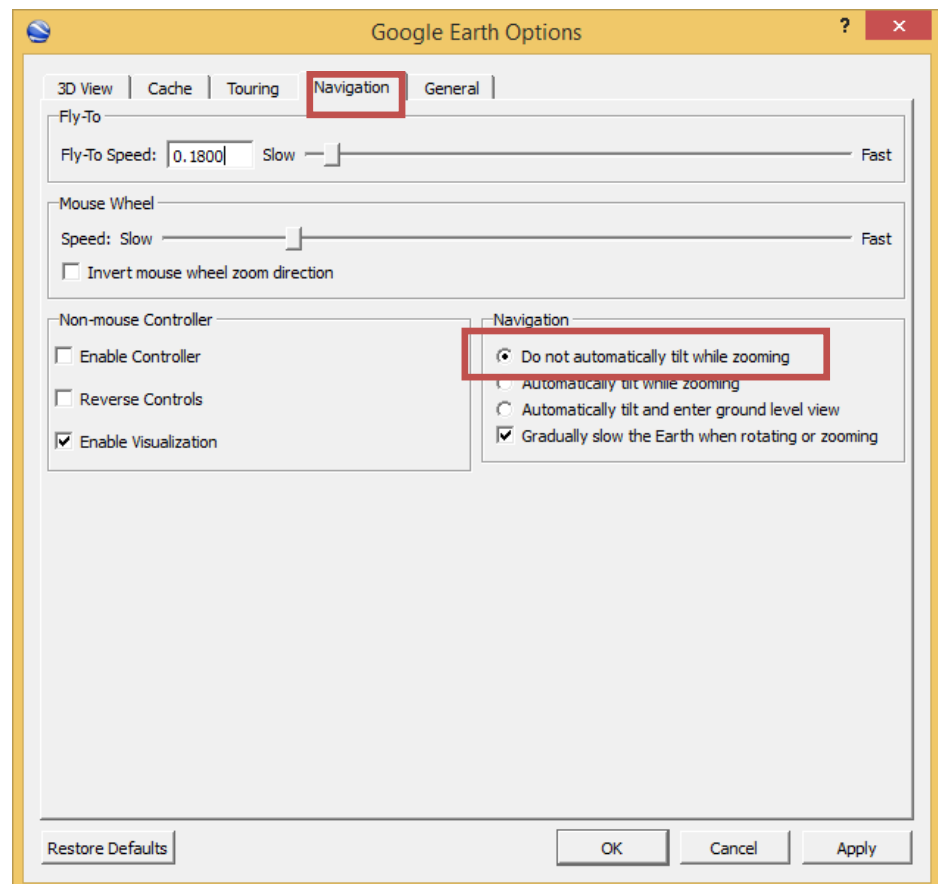
<http://www.google.com/earth/download/ge/agree.html>

Importing Photo's from Google Earth

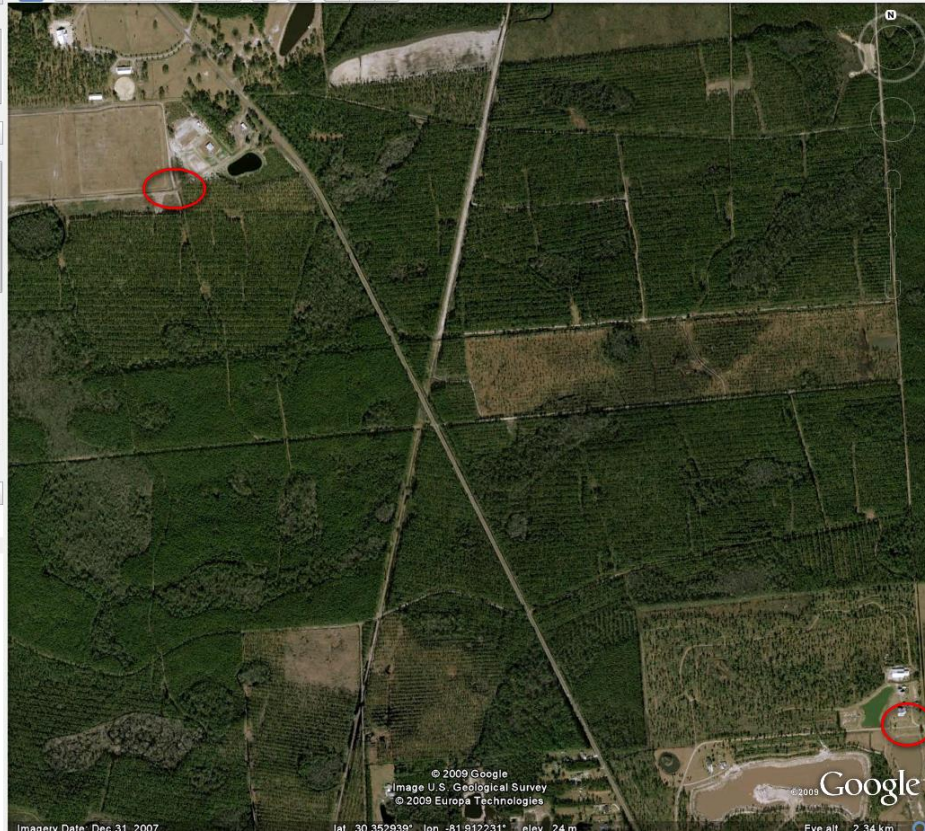
Settings in Google Earth – Show Lat & Long as Decimal Degrees (it makes it easier)



To avoid accidentally tilting the map as you zoom, turn off tilting

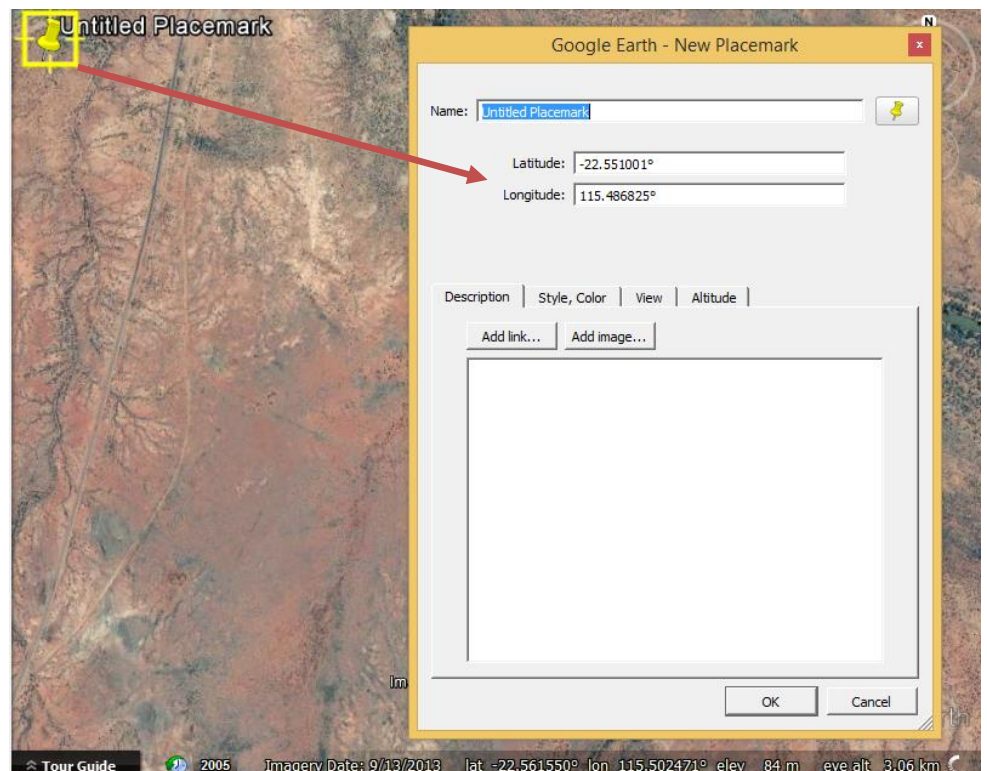


Select the area to save. The smaller the area the better the image (unless you have Google Pro).  
Note 2 points on the map that you will be able to use as Digitising Points in PAM, they should be on a diagonal.  
(Example in Red circles)



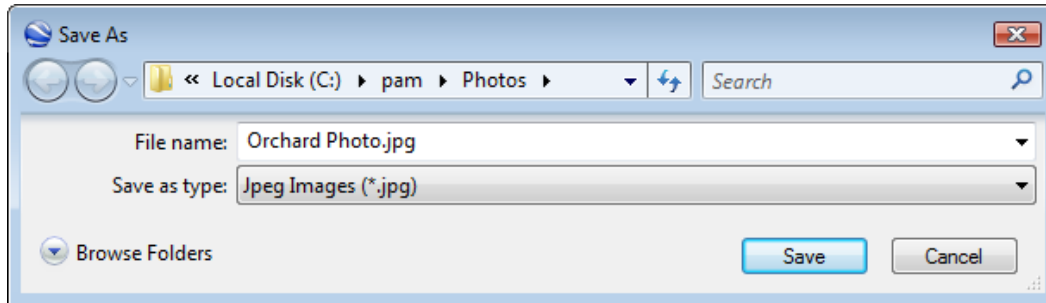
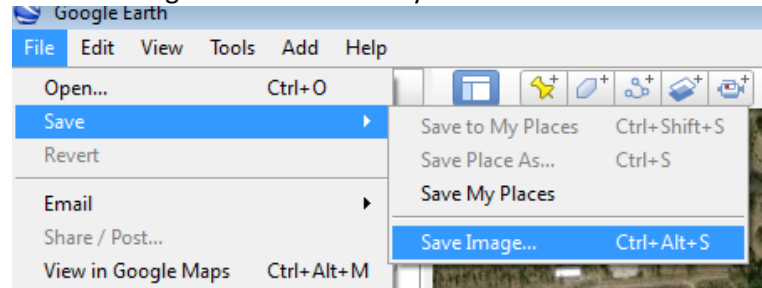
Or... another way to do this  
is to use the Yellow Pins  
provided in Google Earth...

Place a Pin in the top left &  
bottom right corners of the  
area you are saving.

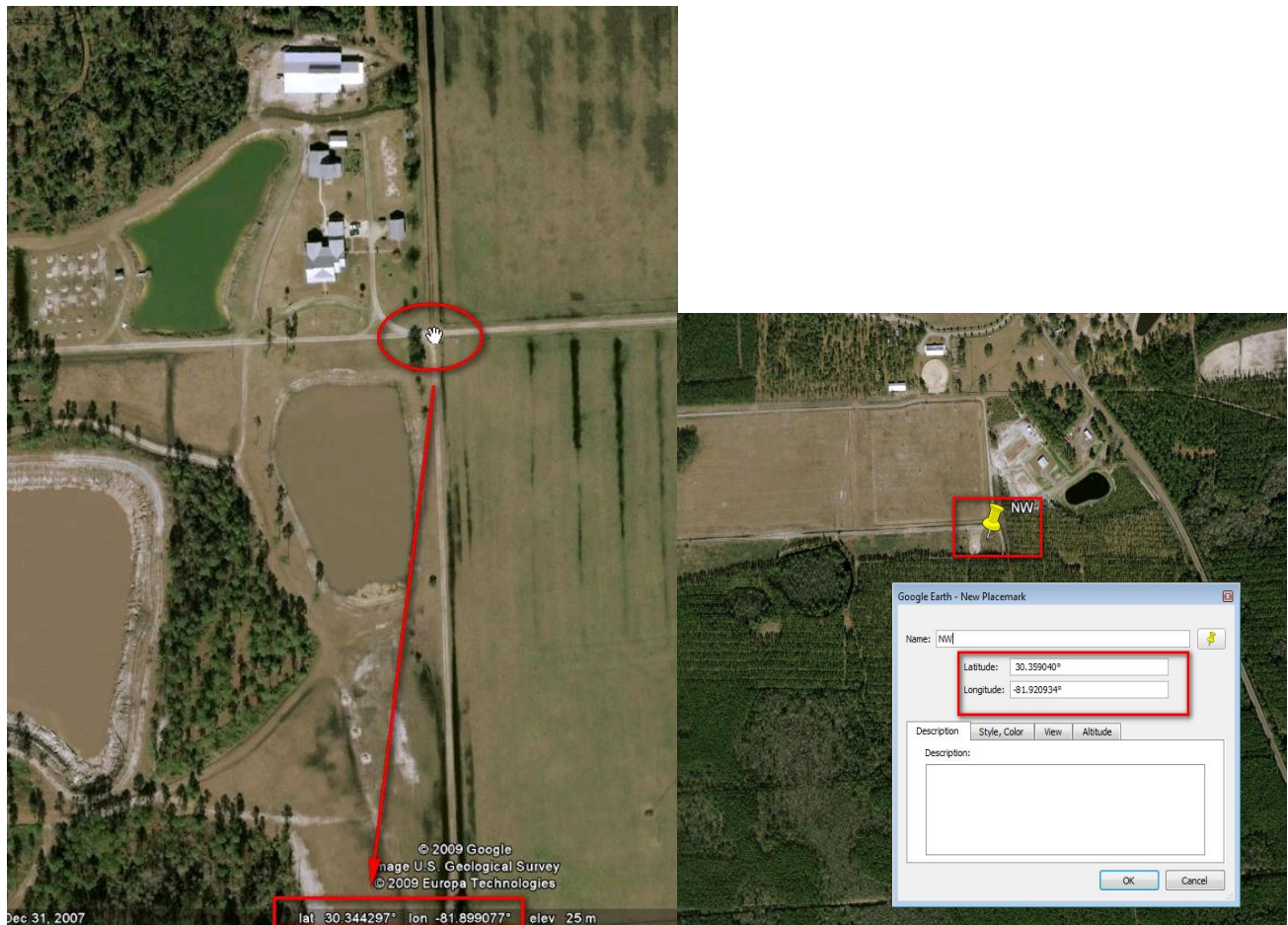




Save the Image to a location that you use for PAM Photos



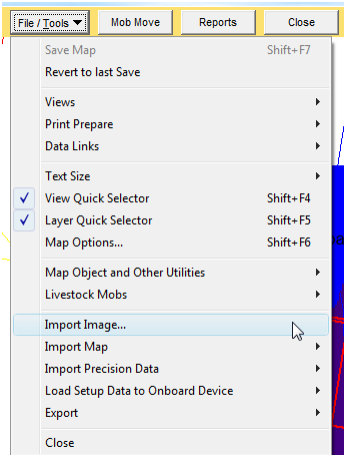
Make a note of the Co-ordinates of the points you are going to use in the digitising either manually (from the bottom of the screen when your mouse is on it) or create a Placemark at each them that will contain the Latitude & Longitude. **Zooming in on the points makes it easier.**



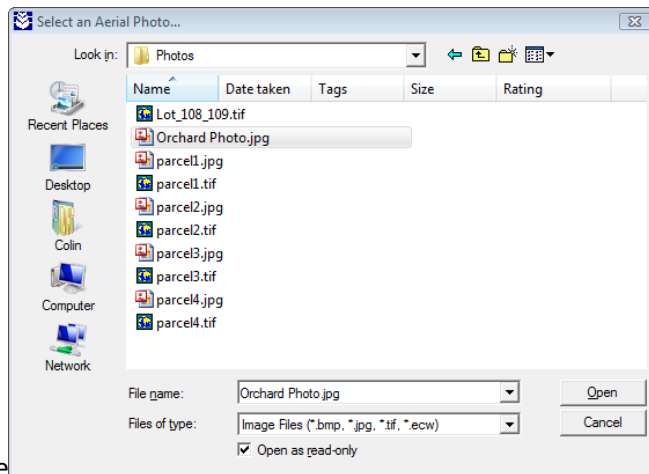
Start PAM

Go into Mapping

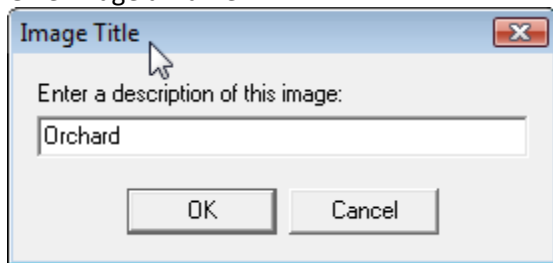
Select File/Tools, Import Image



Select saved image

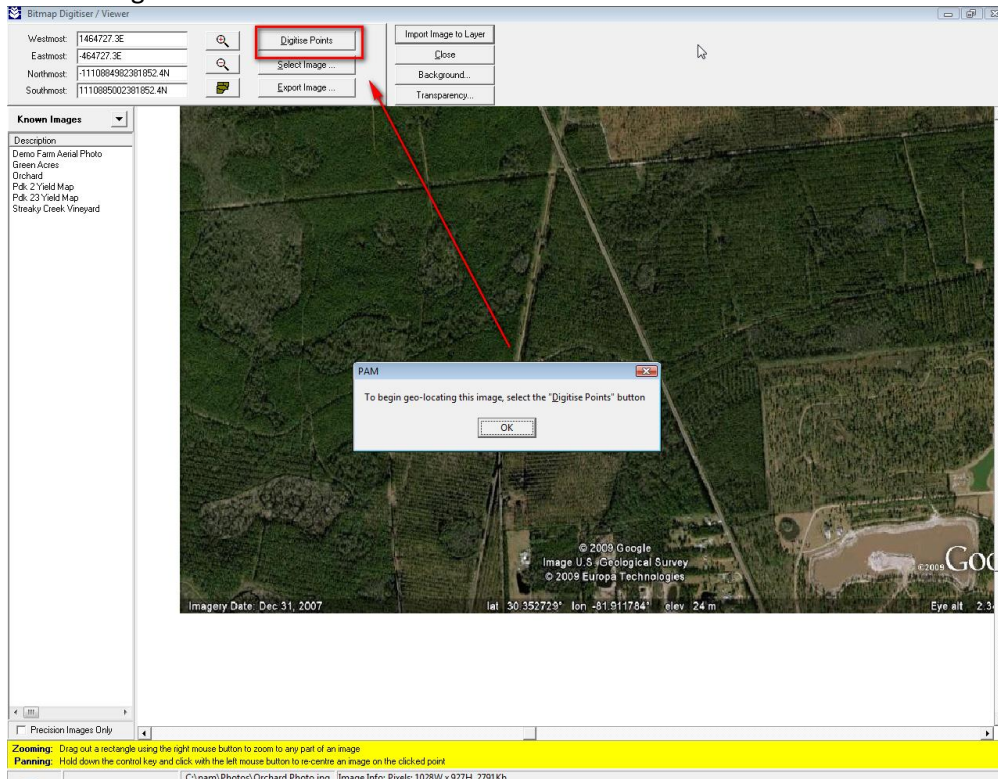


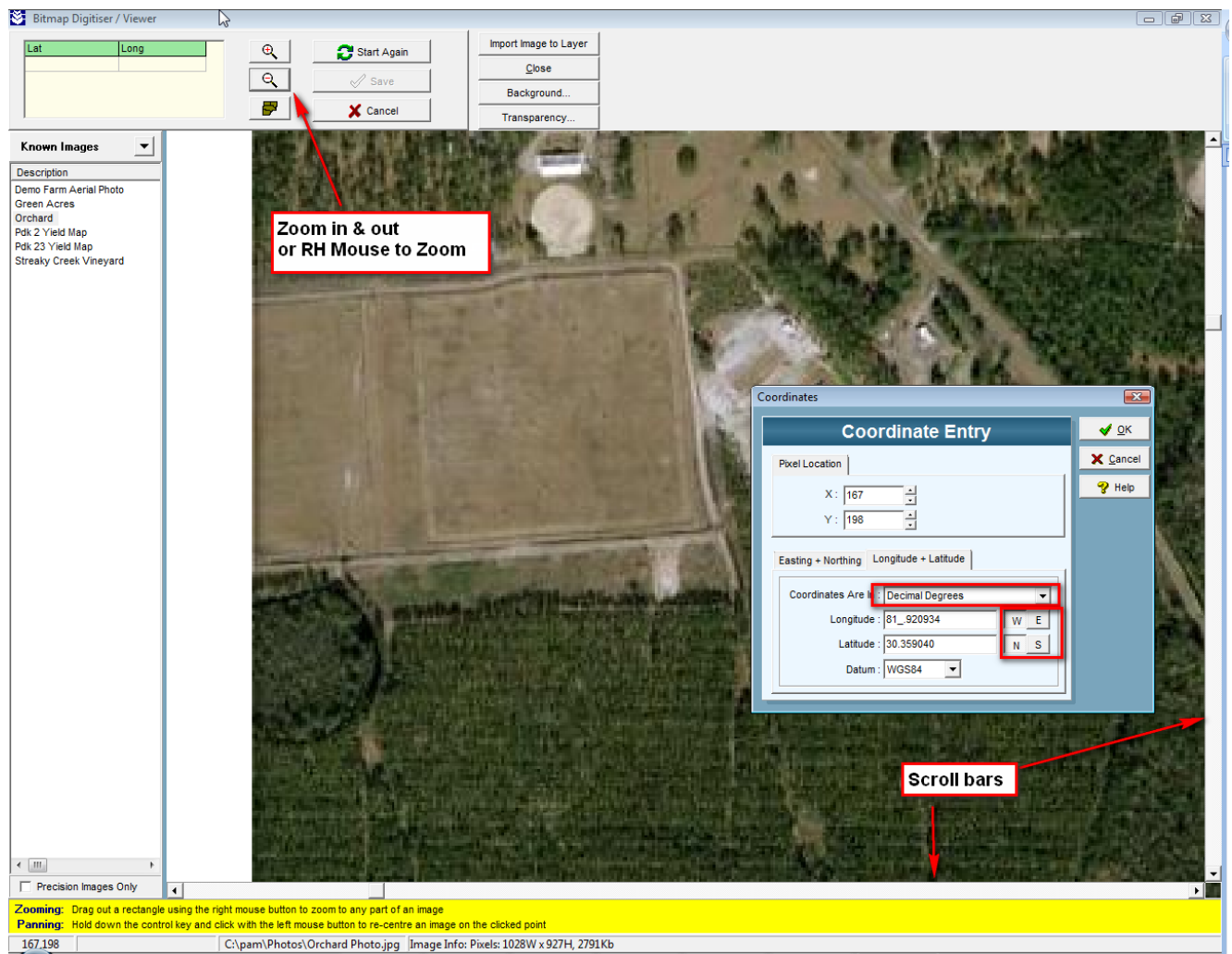
Give Image a Name



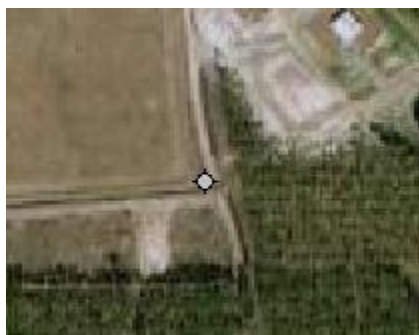
You will get the Digitising Screen come up

Click on Digitise Points button



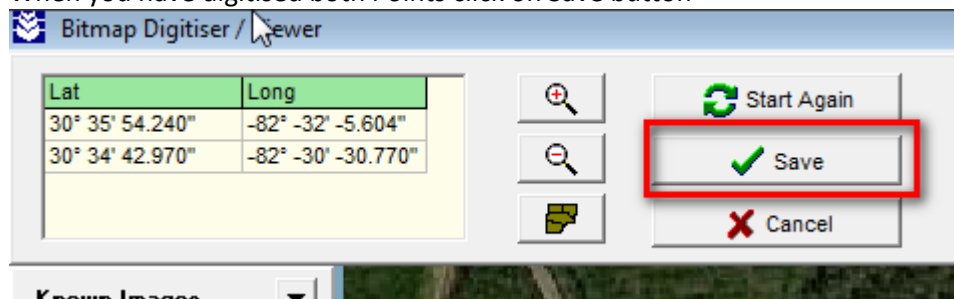


NOTE: Latitude N or S for Northern or Southern Hemisphere, Longitude E or W for west or East of 0°



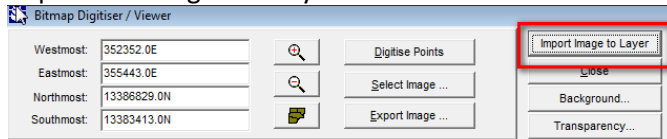
You will see a Point on the Photo

When you have digitised both Points click on Save button

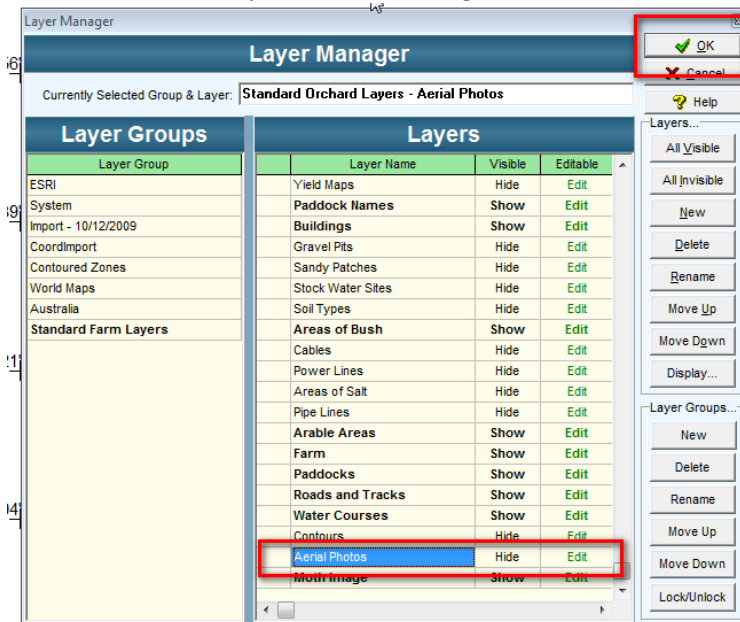




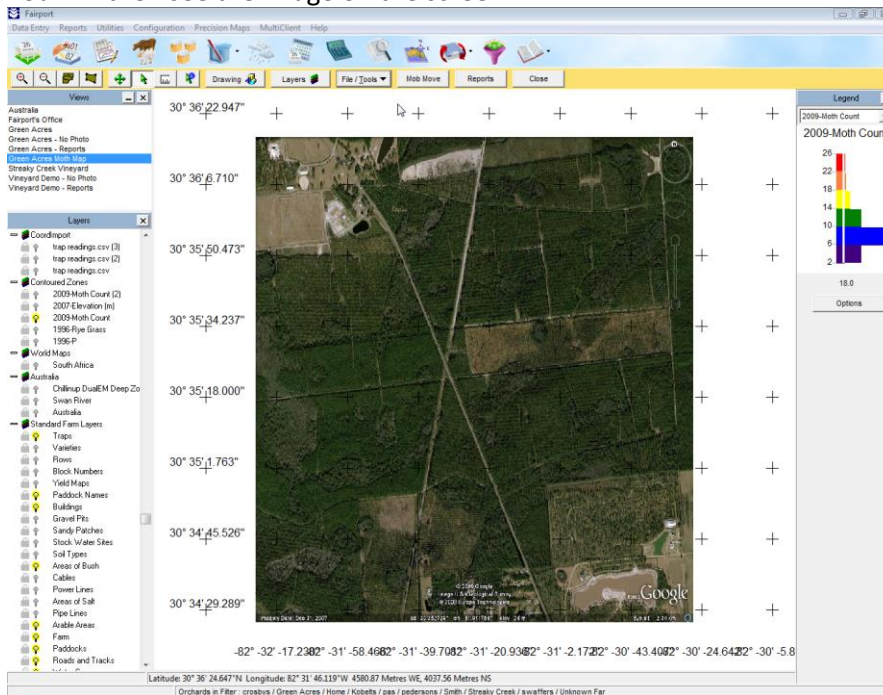
## Import the Image to a Layer



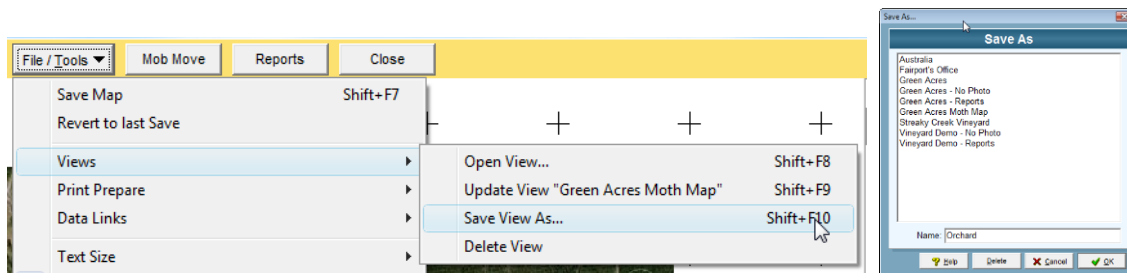
Select or create a Layer to save the image to.



You will then see the image on the screen

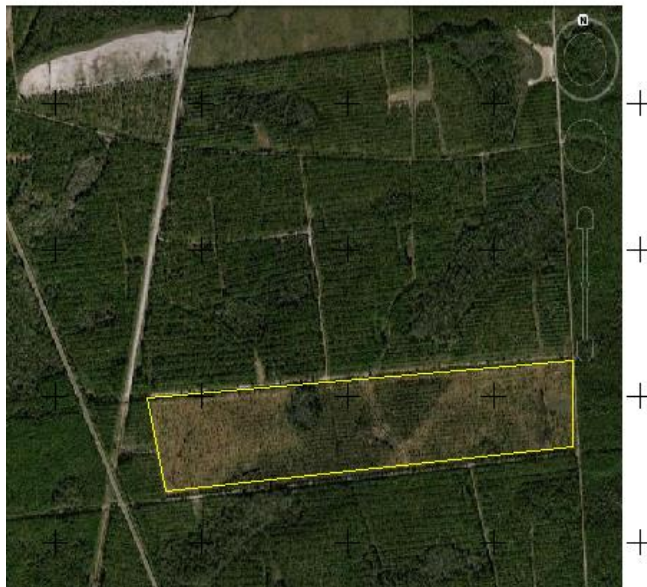
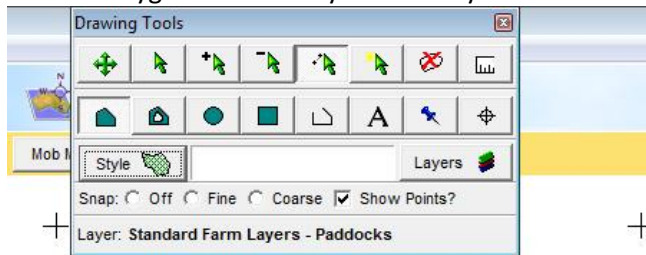


Save the View

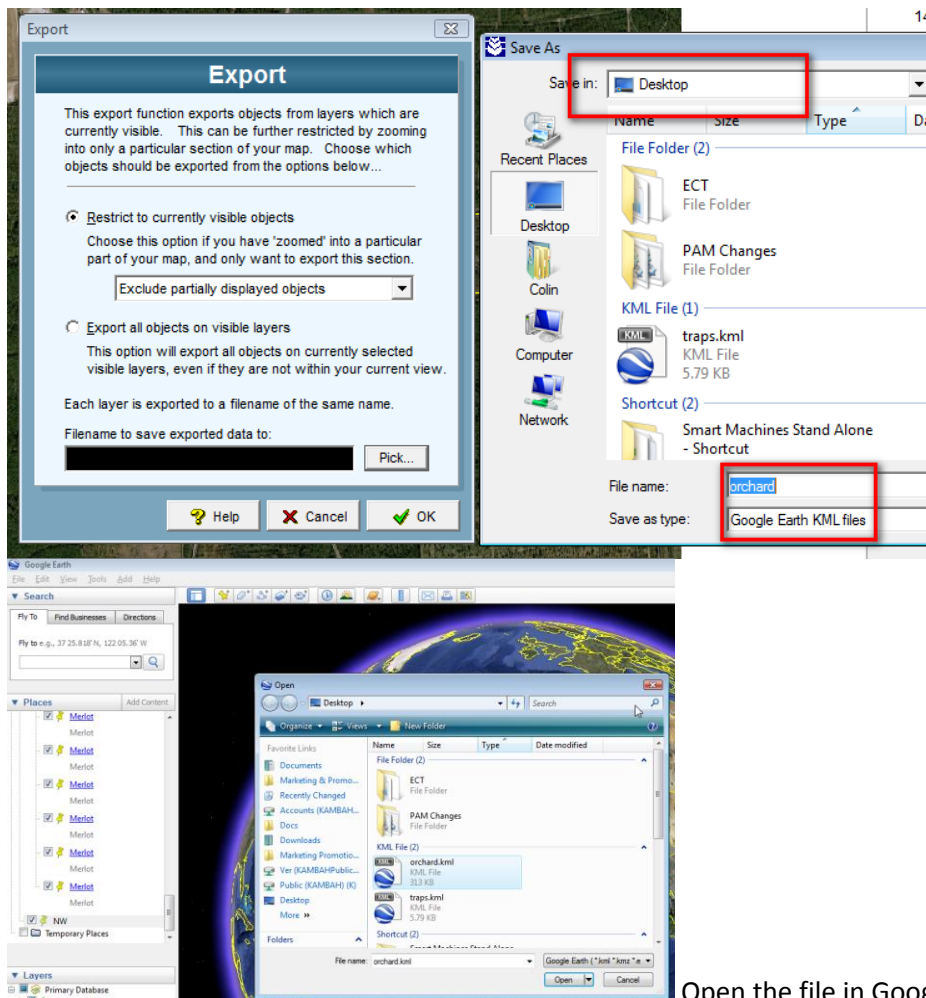


Checking to Image against Google Earth

Draw a Polygon of an area you can easily see.



Turn OFF all other layers  
File/Tools, Export, Google Earth kml  
Save it to your Desktop



## Open the file in Google Earth

You may have to select the last Layer to zoom to the correct location.

