



Importing CBH LoadNet Data - HELP NOTE

CBH Loadnet website	2
Importing the file into PAM	5
How to handle Split Loads	11

CBH Loadnet website

Firstly, load the CBH web site
www.cbh.com.au

And on the home page log in to the Loadnet section, Log in:

Login to LoadNet

My Favourites

Forms

GROWERS OUR REVIEW MARKETERS CUSTOMERS SUPPLIERS AND CONTRACTORS CBH COMMUNITY

LoadNet Login

LoadNet

Grower - WA

123446

Password

LOGIN

Forgot Password? | Forgot PAN? | Mobile Version

Now at the next screen ... click on the Loads TAB and Report

CBH LoadNet

Home SITES LOADS MARKETING

REPORT

TRUCK OVERLOADS

OPTED IN UN-NOMINATED LOADS SUMMARY

The CBH Lupin Pool No. 1 has closed

The CBH Oat Pool No. 1 has closed and all Pool nominations via LoadNet will be directed into Oat Pool No.

You can select what data you want but you can have ALL loads too.

Loads / Report

Your Name will be here

Account Number:

Season: 2016/17

Commodity: Barley

Load Grade: All

Nominated: All

The following criteria are optional

Property: All

Paddock:

Site: All

Vehicle Id: All

Quality Test: All

Display Loads

Now click on “Display Loads” ... this will take you to the next screen:

Loads / Report

Click to Download **Download Results** Step 2

Select Format: ☐ CSV ☒ XML Step 1

No of Records per page 20 Go

Position to page

Previous page Page 1 Of 5 Next page

1 2 3 4 5

Your download is now available **Click Here** Step 3

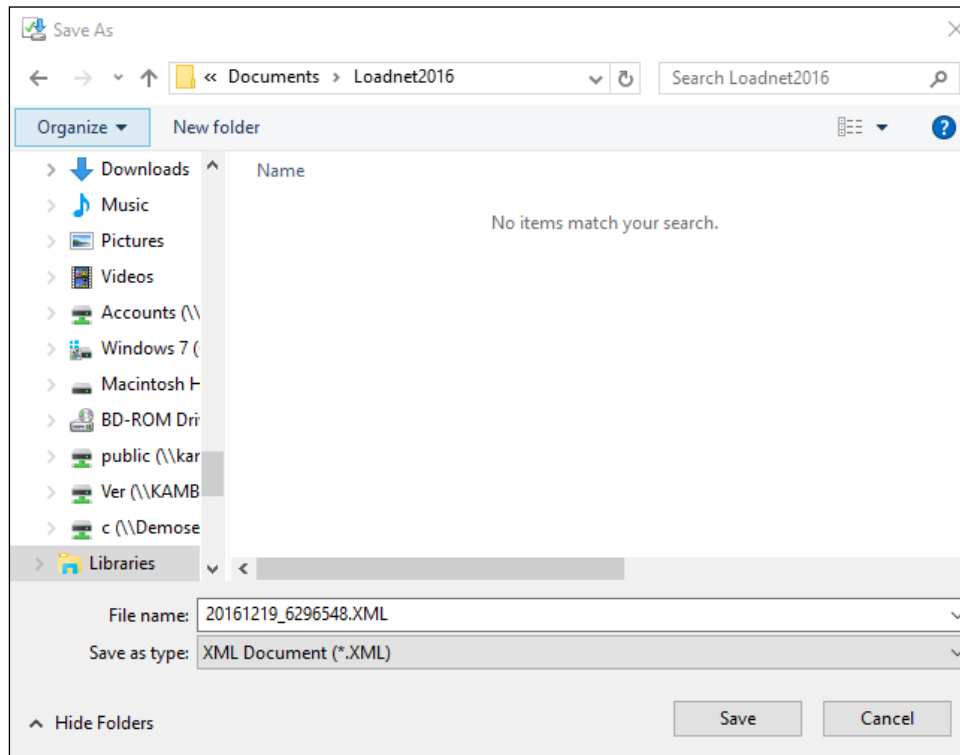
Site	Load Number	Commodity	Load Grade	Tare Date/Time	Acquirer	Nomination Date/Time	Method	Property	Delivered Nett Tonnes
YORK	42900089	Barley	BFED1	5/11/2016 13:54	GLENGRN	16/12/2016 12:02	Contract - Grower Pays Freight	177447	49.16
YORK	42901425	Barley	SCOP1	21/11/2016 13:01	GLENGRN	16/12/2016 12:04	Contract - Grower Pays Freight	177447	46.08
YORK	42901460	Barley	BFED1	21/11/2016 15:07	GLENGRN	16/12/2016 12:02	Contract - Grower Pays Freight	177447	48.04
YORK	42901547	Barley	BFED1	21/11/2016 21:57	GLENGRN	16/12/2016 12:02	Contract - Grower Pays Freight	177447	47.46
YORK	42901624	Barley	BFED1	22/11/2016 13:53	GLENGRN	16/12/2016 12:02	Contract - Grower Pays Freight	177447	48.60
YORK	42901717	Barley	SCOP1	23/11/2016 07:43	GLENGRN	16/12/2016 12:04	Contract - Grower Pays Freight	177447	46.78
YORK	42901765	Barley	SCOP1	23/11/2016 12:12	GLENGRN	16/12/2016 12:04	Contract - Grower Pays Freight	177447	50.86

Select the file format “XML” and then click the “Download Results” button.

After a short while the screen will display *Your Download is now available. Click Here.*

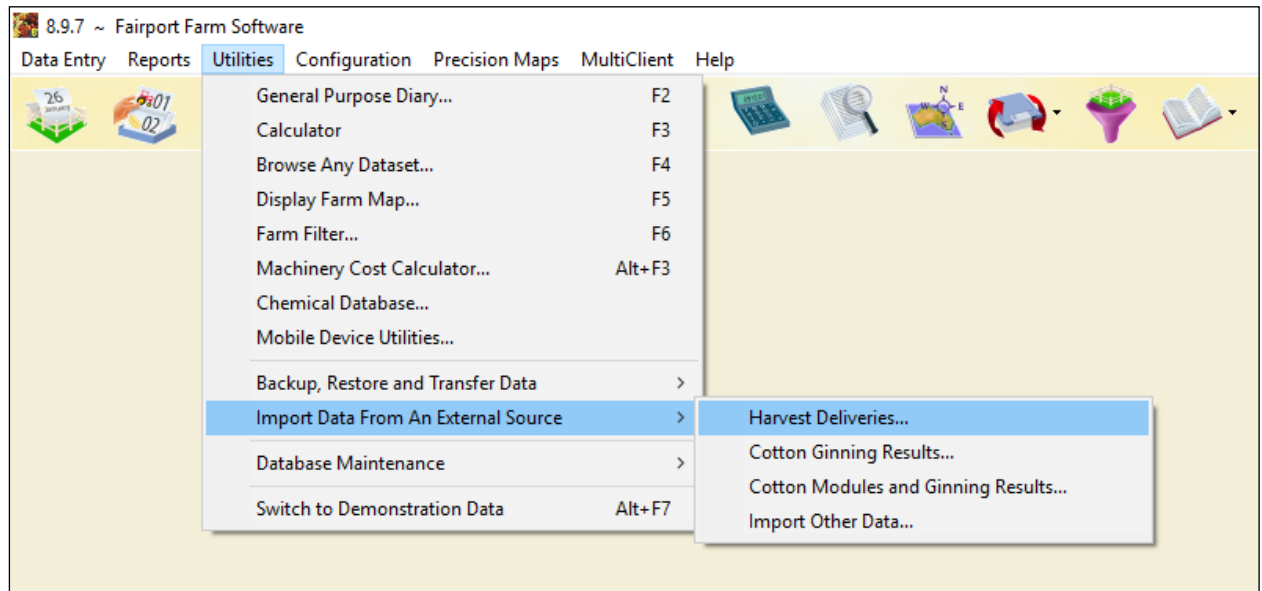
Choose “Save As...” and save the XML file to your computer where you can find it again.

TIP: Make a Loadnet2016 folder to drop the files into if you are going to do multiple downloads.

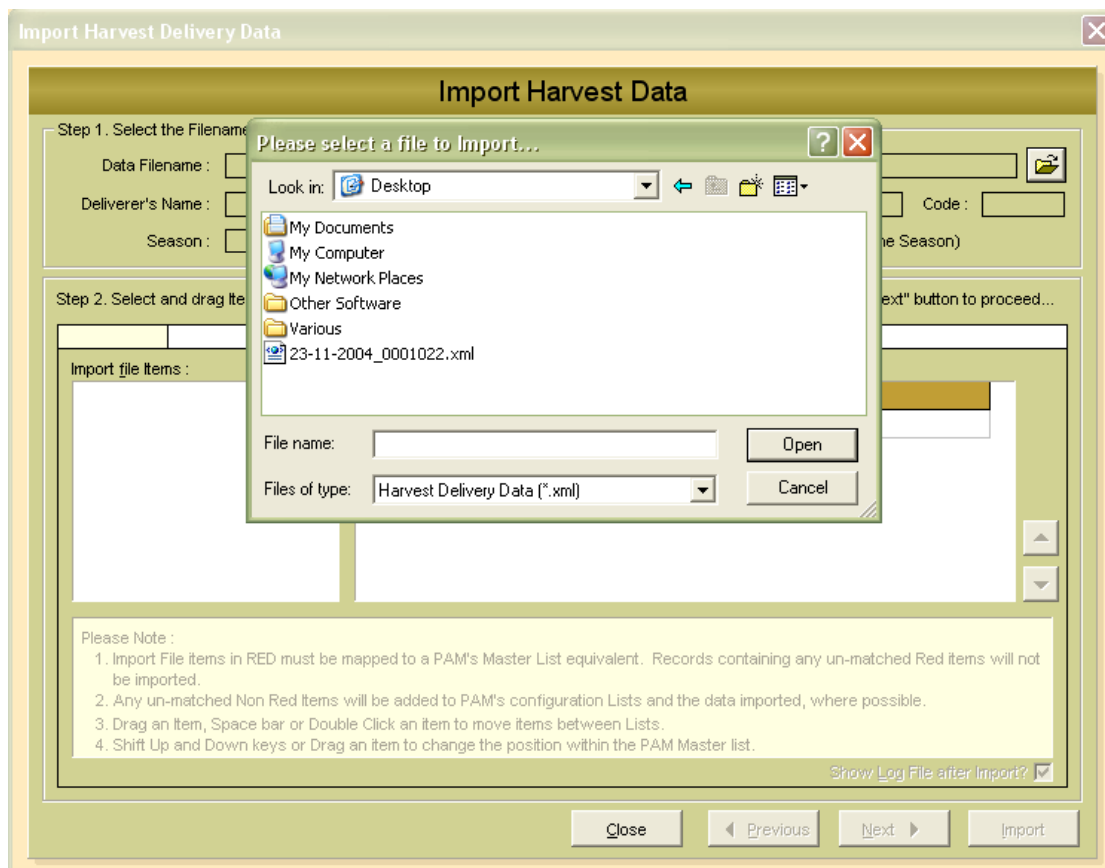


Importing the file into PAM

Run PAM, go to Utilities / Import data from an external source / Harvest Deliveries



To see this ...



Locate your downloaded file using the windows file finder dialog ...

Having found the file, click on “Open” and file will automatically read in and display the data as follows ...

Import Harvest Data

Step 1. Select the Filename to import data from...

Data Filename : C:\Documents and Settings\Roger\Desktop\23-11-2004_0001022.xml

Deliverer's Name : My Trading Name Co. Code :

Season : 2005 (nb. Change the Season to refresh your PAM Master Lists below to the same Season)

Step 2. Select and drag items from your Import file and drop them onto a PAM Master List equivalent ... Select the "Next" button to proceed...

Part 1 of 4 Match Import file's Commodity, Variety and Paddock List to PAM's Crop, Variety and Paddock List

Import file Items :	PAM Master List :	
	Master item	Matched item
BARLEY GAIRDNER : 1	Barley Yagan : 04 (106.52Ha) (A)	BARLEY YAGAN : 11
BARLEY GAIRDNER : 11	Barley Yagan : 05 (45.59Ha) (A)	BARLEY YAGAN : 11a
BARLEY GAIRDNER : 1164	Barley Yagan : 06 (59.5Ha) (B)	BARLEY YAGAN : 19
BARLEY GAIRDNER : 11a	Lucerne Aurora : 06 (59.5Ha) (A)	
BARLEY YAGAN : 25	Lucerne Hunter Field : 17 (102.83Ha) (A)	
BARLEY YAGAN : 9	Lucerne Hunter River : 18 (55.88Ha) (A)	
LUPINS TANJIL : 15	vWheat Yipti : 12 (52.89Ha) (A)	vWHEAT YITPI : 1
WHEAT BLADE : 1		

Please Note :

1. Import File items in RED must be mapped to a PAM's Master List equivalent. Records containing any un-matched Red items will not be imported.
2. Any un-matched Non Red Items will be added to PAM's configuration Lists and the data imported, where possible.
3. Drag an item, Space bar or Double Click an item to move items between Lists.
4. Shift Up and Down keys or Drag an item to change the position within the PAM Master list.

Show Log File after Import? ☒

Close Previous Next Import

After setting the correct Season (under the trading name) do this...

Step 1:

You must match the Crop-Paddock combinations that have been imported from Loadnet with your Cropped Areas in PAM.

You do this by left clicking on an imported (RED) Crop-Paddock combination and dragging your mouse across to the PAM list of cropped areas ... Drop (lift your finger off the left mouse button) the Crop-Paddock combination into the row alongside its corresponding PAM Cropped Area.

Repeat the process above until all loads have been matched up ... Then click the “Next” button

Please Note: If the Loadnet data lists more than one spelling of a paddock (Eg. Pdk 01, Paddock 1, Pdk 1, Paddock 01, 1, 01) then you will need to run through this importing process more than once to “gather up” all incidences of the paddock!

Step 2:

Step 2. Select and drag items from your Import file and drop them onto a PAM Master List equivalent ... Select the "Next" button to proceed...

Part 2 of 4		Match Import file's Site Number List to PAM's Harvest Delivery Destinations List	
Import file Items :	PAM Master List :		
AVON CUNDERDIN MECKERING	Master Item	Matched Item	
	AUSBULK		
	AUSBULK HQ		
	CBH		
	Chemical Shed #1		
	Chemical Shed #2		
	Davidsons Feeds		
	Field Bin 20		

Please Note :

1. Import File items in RED must be mapped to a PAM's Master List equivalent. Records containing any un-matched Red items will not be imported.
2. Any un-matched Non Red Items will be added to PAM's configuration Lists and the data imported, where possible.
3. Drag an Item, Space bar or Double Click an item to move items between Lists.
4. Shift Up and Down keys or Drag an item to change the position within the PAM Master list.

Show Log File after Import? ☒

Matching the delivery destinations ...

Again, use the "Drag and Drop" technique to match the list of delivery destinations from the CBH file with your PAM List.

Please Note: Any delivery destination in the CBH list which is not in your PAM list will be ADDED to your PAM List.

Click "Next" when done

Step 3:

Harvest Classes

Step 2. Select and drag items from your Import file and drop them onto a PAM Master List equivalent ... Select the "Next" button to proceed...

Part 3 of 4	Match Import file's Payment Grade List to PAM's Harvest Classes List																
Import file Items :	PAM Master List :																
STD	<table border="1"><thead><tr><th>Master Item</th><th>Matched Item</th></tr></thead><tbody><tr><td>CHICK PEAS</td><td></td></tr><tr><td>CLOV</td><td></td></tr><tr><td>DURU</td><td></td></tr><tr><td>EXP HAY</td><td></td></tr><tr><td>FEED BARLE</td><td>FEED</td></tr><tr><td>FM7</td><td></td></tr><tr><td>FRAN</td><td></td></tr></tbody></table>	Master Item	Matched Item	CHICK PEAS		CLOV		DURU		EXP HAY		FEED BARLE	FEED	FM7		FRAN	
Master Item	Matched Item																
CHICK PEAS																	
CLOV																	
DURU																	
EXP HAY																	
FEED BARLE	FEED																
FM7																	
FRAN																	

Please Note :

1. Import File items in RED must be mapped to a PAM's Master List equivalent. Records containing any un-matched Red items will not be imported.
2. Any un-matched Non Red Items will be added to PAM's configuration Lists and the data imported, where possible.
3. Drag an item, Space bar or Double Click an item to move items between Lists.
4. Shift Up and Down keys or Drag an item to change the position within the PAM Master list.

Show Log File after Import? ☒

Again ... the same story.

Drag and Drop the CBH items to match with your PAM Items... Any item not matched to your PAM list will be added to your PAM list. Click "Next".

Step 4:

Harvest Monitoring Items

Step 2. Select and drag items from your Import file and drop them onto a PAM Master List equivalent ... Select the "Next" button to proceed...

Part 4 of 4 Match Import file's Test Name List to PAM's Crop Harvest Monitoring Items List

Import file Items :	PAM Master List :
Other SeedsF.Mat. (grams)	Master Item
Protein (% to 2dec.place)	Matched Item
Pulse Weight	M Joules of Energy
Radish Pods %wt	Micronaire
Radish Pods grams	Moisture %
Sappy Green/Sprout Lupins	Moisture Content (%)
Screenings (% by weight)	N D F
Screenings (grams)	Oil Content
Shriv. Or Dist. (% by Wt)	Protein %
Shriv. Or Dist. (grams)	Protein (% to 1dec.place)
Skipped (count)	Screenings %

Please Note :

1. Import File items in RED must be mapped to a PAM's Master List equivalent. Records containing any un-matched Red items will not be imported.
2. Any un-matched Non Red Items will be added to PAM's configuration Lists and the data imported, where possible.
3. Drag an item, Space bar or Double Click an item to move items between Lists.
4. Shift Up and Down keys or Drag an item to change the position within the PAM Master list.

Show Log File after Import? ☒

Again ... the same story.

Drag and Drop the CBH items to match with your PAM Items... Any item not matched to your PAM list will be added to your PAM list.

Step 5: Now you're ready to click the "Import" button.

If you have not matched all the CBH Crop-Paddock list items with PAM items you will now see this message...

Import Harvest Delivery Data

 **Confirmation**

Not all Red Import file items have been matched to a Master List item.

The records containing these items will not be imported.

Do you wish to proceed?

☒ Yes

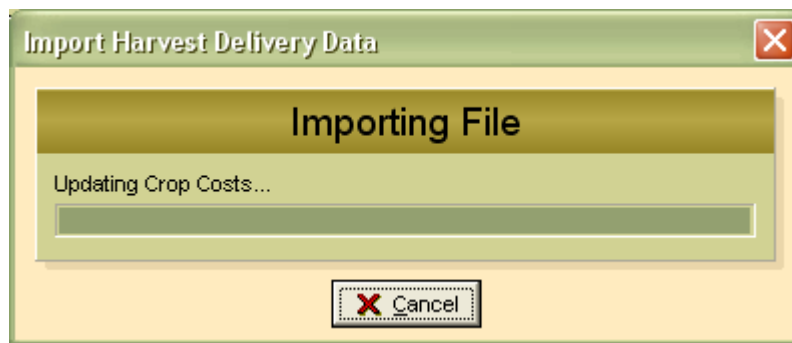
☐ No

☒ Cancel

Please Note: You may have not matched all the CBH Crop-Paddock list items on purpose. For example, you may have two or more different spellings of the same PAM paddock!

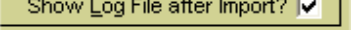
PAM will happily import the CBH file again to collect up those unmatched paddocks... No harm will be done if you import the CBH file more than once.

Then this progress bar ...



And finally this ...



If you ticked the  option at the bottom of the main Harvest Data Import screen you will be shown a full report of what PAM has imported or skipped.

That's it ... the data is in PAM. If you need to re-import the file to cater for duplicate misspelt paddock names, repeat the steps 1 to 5.

How to handle Split Loads

As the CBH file does split loads (if you enter the % on the delivery docket). If you have not done that you will need to do this do this:

When delivering a split load (a load that has come from more than one paddock) you should tell CBH one of the paddock names. Even though they allow you to give 2 paddock names and a percentage of grain from each, that information doesn't appear in the CBH data file! After downloading the Loadnet file and importing it into PAM, find the load numbers that you know were split over two or more paddocks and Edit them ... Either Double Click on the record in the Paddock Activities Diary or select the record and click on the "Edit" button.

The screenshot shows the 'Harvest Delivery' window. At the top, there's a 'Job Date' field set to '21/11/2004'. Below it is a table with columns: Class or Grade, Load ID, Delivered to..., Total Units, Monitoring, Base Price, Discounts (\$/Unit), Premiums (\$/Unit), Total Value, and Net Value (\$/Unit). The first row shows 'AH1' as the class, '410015' as the load ID, 'AVON' as the delivery location, and '25.8 T' as the total units. Below the table are buttons for '+', '-', and a 'Tools' dropdown. At the bottom, there's a row of buttons: a help icon, a 'Areas...' button (circled in red), 'Back (F5)', 'Next (F8)', 'Save (F10)', and 'Cancel'.

Now click on the "Areas" button ... and click on the other paddocks

The screenshot shows the 'Area Selection' window. It has tabs for 'Lists' and 'Map'. Under 'Lists', there's a section for '2005 Management Groups'. A tree view shows 'Yagan 06 : Fairport (B - 59.50Ha)', 'Lucerne', 'Aurora 06 : Fairport (A - 59.50Ha) [P]', 'Hunter Field 17 : Fairport (A - 102.83Ha) [P]', 'Hunter River 18 : Fairport (A - 55.88Ha) [P]', and 'Wheat'. The 'Wheat' group is expanded, showing 'Yipti 12 : Fairport (A - 52.89Ha)', 'Yipti 13 : Fairport (A - 206.48Ha)', and 'Yipti 14 : Fairport (A - 96.11Ha)'. Below this, there's a checkbox for 'Display as a list' and a 'Sort By' section with radio buttons for 'Crop/Paddock' (selected) and 'Paddock/Crop'. At the bottom, there's a table with columns: Paddock / Farm, Total Ha, Arable Ha, Cropped Ha, and Worked Ha. The first row shows '13 (Fairport)' with 'Wheat Yipti' and values 220.96, 206.48, 206.48, and 206.48. The second row shows '12 (Fairport)' with 'Wheat Yipti' and values 56.84, 52.89, 52.89, and 52.89. At the bottom, there's a 'Clear Selected' button, a 'Management Groups...' button, and a 'Total Area Selected : 259.37' label.

which shared this load. Click "OK"

Now back at the main Harvest Delivery screen ...

Harvest Delivery

Job Date : 21/11/2004

Class or Grade	Load ID	Delivered to...	Total Units	Monitoring	Base Price	Discounts (\$/Unit)	Premiums (\$/Unit)	Total Value
AH1	410015	AVON	25.8 T ...	(space)	\$0.00/T	\$0.00/T	\$0.00/T	\$0.00

Tools ▼ + - ✓ ✕

Click on the [...] button in the “Total Units” cell ... and you will see this screen pop up...

Assign Harvest Quantities per Area per Load ID

Load ID : 41001592

Total Units for Load ID : 25.80 Tonnes

Selected Worked Areas	Quantity (Tonnes)
13 (Fairport) Wheat Yipti - 206.48Ha	20.54
12 (Fairport) Wheat Yipti - 52.89Ha	5.26

Tip: Press F10 to save and exit

25.8 Tonnes allocated

OK Cancel

Allocate the tonnes to the two paddocks... Click “OK” and then back the previous screen click “Save”

Harvest Delivery

Job Date : 21/11/2004

Class or Grade	Load ID	Delivered to...	Total Units	Monitoring	Base Price	Discounts (\$/Unit)	Premiums (\$/Unit)	Total Value	Net Value (\$/Unit)
AH1	410015	AVON	25.8 T (space) ...		\$0.00/T	\$0.00/T	\$0.00/T	\$0.00	\$0.00/T

Tools ▼ + - ✓ ✕

? Areas... Back (F5) Next (F8) Save (F10) Cancel